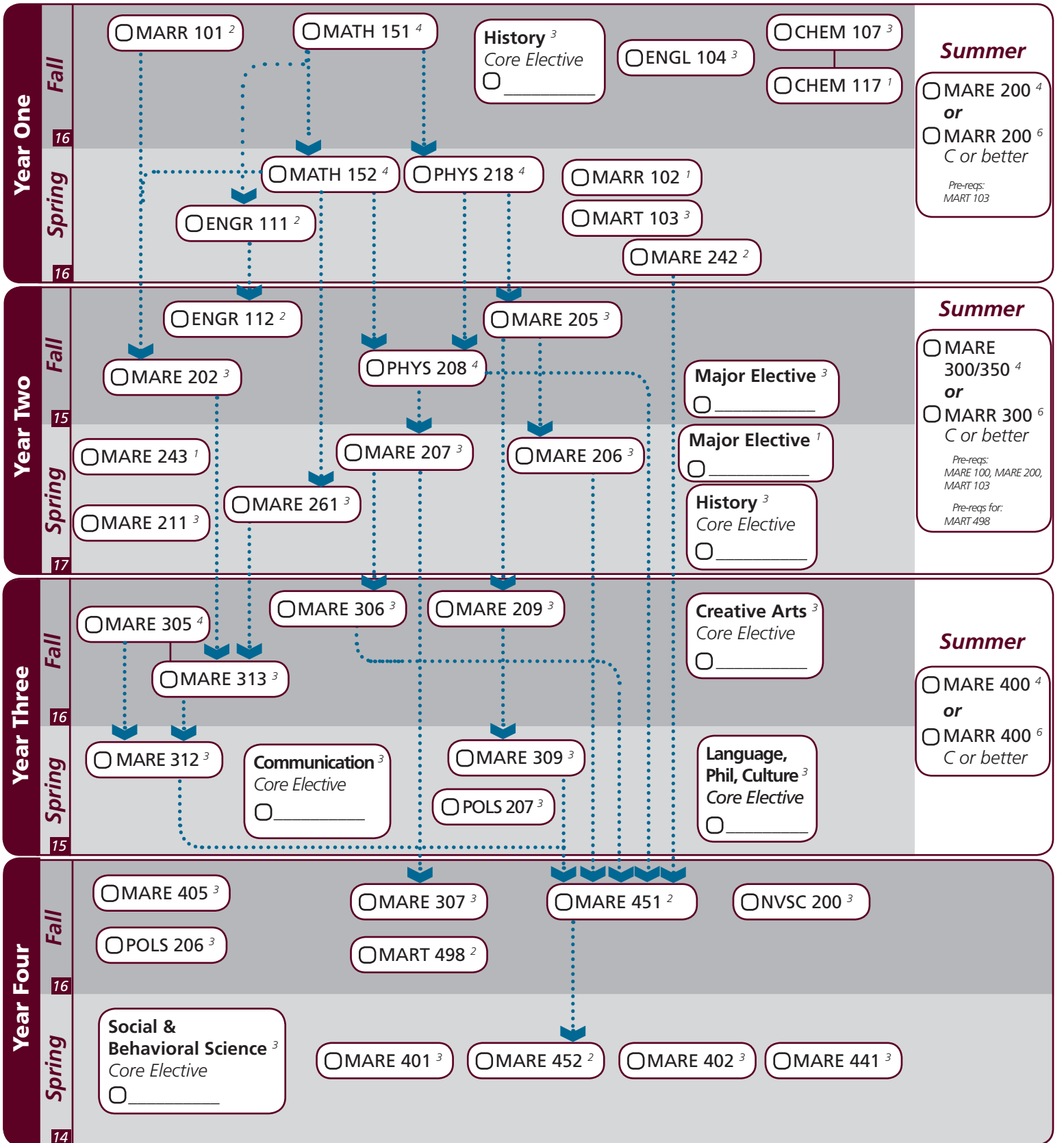


Notes: _____

ZOPT 100⁰
engine option

ZOPT 300⁰
engine option

Foreign Language⁶
 CAEX 001 ICD³
 CAEX 004 ICD³



Key

..... Pre-requisite

———— Co-requisite

³ Course Credit Hrs

15 Semester Credit Hrs

I understand that the courses indicated on this sheet are required for my degree. If I change any of the course recommendations without consulting an academic advisor, it could affect my graduation timing, financial aid or could not count towards my degree.

Student Signature: _____ **Date:** _____

Academic Advisor Signature: _____ **Date:** _____

Major	Texas A&M University at Galveston Course Options					
Major Courses ⁹⁰	ENGR 111 MARE 242 MARE 405 MARR 306 MARR 452	ENGR 112 MARE 243 MARE 441 MARR 307 MART 103	MARE 202 MARE 261 MARR 101 MARR 312 MART 498	MARE 205 MARE 305 MARR 102 MARR 401 NVSC 200	MARE 206 MARE 309 MARR 207 MARR 402	MARE 209 MARE 313 MARR 211 MARR 451
Summer Cruises ¹²⁻¹⁸	MARE 200 or MARR 200		MARE 300/350 or MARR 300		MARE 400 or MARR 400	
MARE Electives ⁴	Select any course between MARE 289 -499					
A cumulative 2.25 GPR must be achieved on all major requirement courses						

Core	Texas A&M University at Galveston Course Options					
Communication ⁶	<i>Required:</i> <i>Select 1:</i>	ENGL 104 COMM 203	ENGL 203	ENGL 210		
Mathematics ⁸ <i>All courses required</i>	MATH 151	MATH 152				
Life & Physical Sciences ¹² <i>All courses required</i>	CHEM 107	CHEM 117	PHYS 218	PHYS 208		
Language, Philosophy, Culture ³ <i>Select 1 course</i>	<i>ANTH 210</i> ENGL 334 HIST 242	ANTH 316 ENGL 335 PHIL 251	<i>ENGL 204</i> <i>ENGL 338</i> <i>SPAN 201</i>	<i>ENGL 222</i> <i>ENGL 374</i> <i>SPAN 202</i>	<i>ENGL 253</i> <i>GEOG 202</i>	ENGL 330 <i>GEOG 301</i>
Creative Arts ³ <i>Select 1 course</i>	<i>ARTS 150</i> <i>MUSC 226</i>	ENGL 212	<i>ENGL 251</i>	KINE 210	HISP 204	MAST 352
Social & Behavioral Science ³ <i>Select 1 course</i>	ANTH 202 PSYC 107	<i>COMM 365</i> <i>SOCI 205</i>	ECON 202	ECON 203	<i>GEOG 201</i>	<i>MARS 210</i>
American History ⁶ <i>Select 2 courses</i>	HIST 105	HIST 106	HIST 226	HIST 232		
Govt/Political Science ⁶ <i>Both courses required</i>	POLS 206	POLS 207				

University	Texas A&M University at Galveston Course Options					
Writing Intensive ⁶	MARE 405	MARE 452				
International and Cultural Diversity ⁶ <i>Select 2 courses</i> <small>Note that any blue marked major or core course will concurrently fulfill both requirements</small>	<i>ANTH 210</i> ENGL 251 GEOG 201 MARE 400 MAST 411 SPAN 202	<i>ARTS 150</i> ENGL 253 GEOG 202 MARR 400 MUSC 226	<i>COMM 365</i> ENGL 338 GEOG 301 MARS 210 NAUT 400	<i>ECON 452</i> ENGL 339 HIST 405 MARS 280 POLS 366	<i>ENGL 204</i> ENGL 374 MARA 440 MARS 432 SOCI 205	<i>ENGL 222</i> FILM 251 MARB 340 MART 400 SPAN 201

Courses in this section can concurrently fulfill a Core or Major Requirement;
Two semesters of a single foreign language is required for students who did not complete the foreign language req in high school